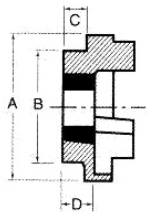
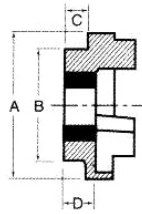


## 7.04 Tipo HRC

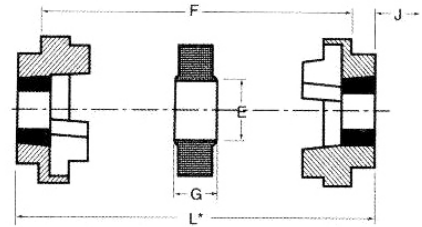
### TIPO HRC



F CUBO



H CUBO



### DIMENSIONES Y CARACTERISTICAS

TIPO	MONTAJE	A	B	E	F	G	TAPER	EJE		C	D	J
								mm	inch			
70	F	69	60	31	25.0	18.0	1008	25	1	20.0	23.75	29
70	H	69	60	31	25.0	18.0	1008	25	1	20.0	23.75	29
90	F	85	70	32	30.5	22.5	1108	28	11/8	19.5	23.25	29
90	H	85	70	32	30.5	22.5	1108	28	11/8	19.5	23.25	29
110	F	112	100	45	45.0	29.0	1210	42	15/8	18.5	26.75	38
110	H	112	100	45	45.0	29.0	1210	42	15/8	18.5	26.75	38
130	F	130	105	50	53.0	36.0	1610	42	15/8	18.0	26.50	38
130	H	130	105	50	53.0	36.0	1610	42	15/8	18.0	26.50	38
150	F	150	115	62	60.0	40.0	2012	50	2	23.5	33.50	42
150	H	150	115	62	60.0	40.0	2012	50	2	23.5	33.50	42
180	F	180	125	77	73.0	49.0	2517	60	2 1/2	34.5	46.50	48
180	H	180	125	77	73.0	49.0	2517	60	2 1/2	34.5	46.50	48
230	F	225	155	99	85.5	59.5	3020	75	3	39.5	52.50	55
230	H	225	155	99	85.5	59.5	3020	75	3	39.5	52.50	55
280	F	275	185	119	105.5	74.5	3535	90	3 1/2	74.0	90.00	67
280	H	275	185	119	105.5	74.5	3535	90	3 1/2	74.0	90.00	67

TIPO	LARGO TOTAL (L*) FF, FH, HH	MASA KG	INERCIA Mr <sup>2</sup> Kgm	Dynamic Stiffness Nm/°	MAXIMO ESTIRAMIENTO		Nominal torque Nm
					Paralelo	Axial	
70	65.0	1.00	0.00085	-	0.3	+0.2	31
90	69.5	1.17	0.00115	-	0.3	+0.5	80
110	82.0	5.00	0.00400	65	0.3	+0.6	160
130	89.0	5.46	0.00780	130	0.4	+0.8	315
150	107.0	7.11	0.01810	175	0.4	+0.9	600
180	142.0	16.60	0.04340	229	0.4	+1.1	950
230	164.5	26.00	0.12068	587	0.5	+1.3	2000
280	207.5	55.30	0.44653	1025	0.5	+1.7	3150