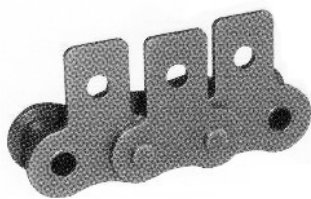


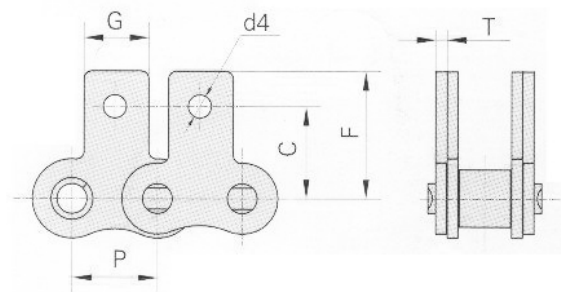
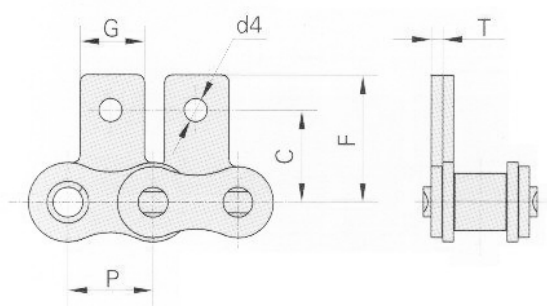
## 1.14 Cadenas de Rodillos con aletas rectas un taladro en acero normal e inoxidable



1 LADO



AMBOS LADOS



| DIN/ISO<br>CADENA<br>No. | ANSI<br>CADENA<br>No. | P      | G    | C     | F     | T    | d4   |
|--------------------------|-----------------------|--------|------|-------|-------|------|------|
|                          |                       | mm     | mm   | mm    | mm    | mm   | mm   |
| 06C                      | 35                    | 9.525  | 7.9  | 9.50  | 14.55 | 1.30 | 3.4  |
| 08A                      | 40                    | 12.700 | 9.5  | 12.70 | 19.05 | 1.50 | 3.4  |
| 085                      | 41                    | 12.700 | 9.5  | 11.85 | 16.55 | 1.30 | 3.6  |
| 10A                      | 50                    | 15.875 | 12.7 | 15.90 | 25.25 | 2.03 | 5.5  |
| 12A                      | 60                    | 19.050 | 15.9 | 18.30 | 29.33 | 2.42 | 5.5  |
| 16A                      | 80                    | 25.400 | 19.1 | 24.60 | 34.70 | 3.25 | 6.8  |
| 20A                      | 100                   | 31.750 | 25.4 | 31.80 | 43.30 | 4.00 | 9.2  |
| 24A                      | 120                   | 38.100 | 28.6 | 36.50 | 51.60 | 4.80 | 9.8  |
| 28A                      | 140                   | 44.450 | 34.9 | 44.50 | 62.00 | 5.60 | 11.4 |
| 32A                      | 160                   | 50.800 | 38.1 | 50.80 | 69.85 | 6.40 | 13.1 |
| 40A                      | 200                   | 63.500 | 50.8 | 63.50 | 88.9  | 8.00 | 16.3 |
| *06B                     |                       | 9.525  | 8.0  | 9.52  | 13.50 | 1.30 | 3.5  |
| 08B                      |                       | 12.700 | 9.5  | 13.35 | 18.90 | 1.60 | 4.3  |
| 10B                      |                       | 15.875 | 14.3 | 16.50 | 22.95 | 1.70 | 5.3  |
| 12B                      |                       | 19.050 | 16.0 | 21.45 | 28.60 | 1.85 | 6.4  |
| 16B                      |                       | 25.400 | 19.1 | 23.15 | 34.00 | 3.10 | 6.4  |
| 20B                      |                       | 31.750 | 35.0 | 30.50 | 45.70 | 3.50 | 9.0  |